

EN-840T

DOUBLE BALLOON ENDOSCOPE

NEW





DBE

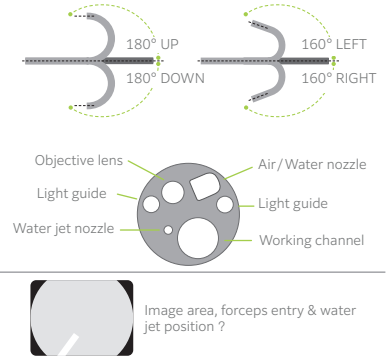
EN-840T *ELUXEO* ENTEROSCOPE Therapeutic type



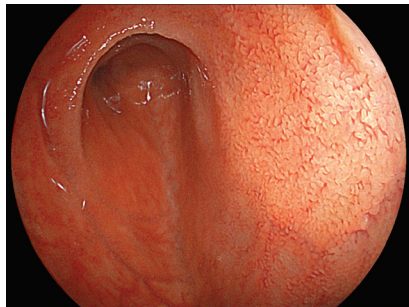
The new EN-840T double balloon endoscope is equipped with a CMOS sensor and achieves HD image quality. It also features LCI (Linked Color Imaging) and BLI (Blue Light Imaging) to support from observation to treatment. Due to its Water Jet Function and blood adhering on the mucous membranes can be washed away and the endoscope's field of view can be cleaned promptly.



Viewing direction	0° (Forward)
Field of view	140°
Observation range	2–100 mm
Bending capability	Up 180° / Down 180° Right 160° / Left 160°
Distal end diameter	9.4 mm
Flexible portion diameter	9.3 mm
Working channel diameter	3.2 mm
Working length	2,000 mm
Total length	2,300 mm



Whight Light Imaging



LCI

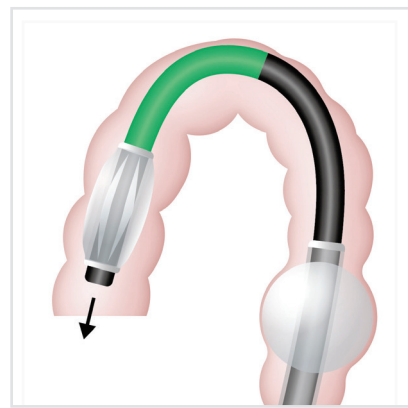
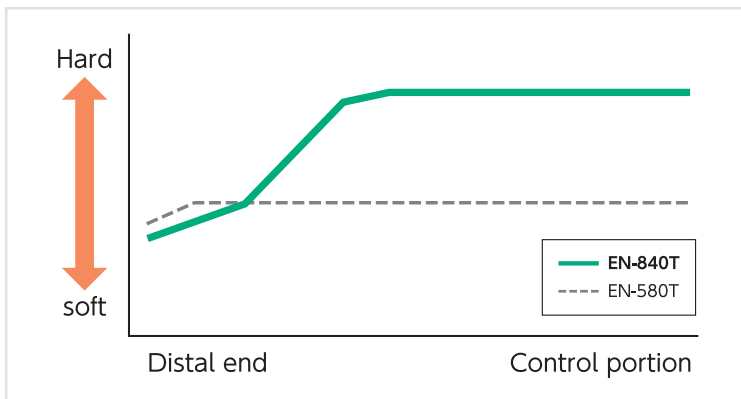


BLI



Improved insertion portion

EN-840T features the established insertion portion that is hard at the control portion and soft at the distal end. It is aiming to make it easier to transmit operations such as pushing, pulling, and rotating to the distal end of the endoscope. In addition, the curve vertex when bending is designed closer to the tip of the flexible portion compared to EN-580T.



FUJIFILM Healthcare Europe GmbH
 Balcke-Dürr-Allee 6 | 40882 Ratingen, Germany
 Tel.: +49 2102 5364-0 | endoscopy_eu@fujifilm.com
 www.fujifilm-endoscopy.com