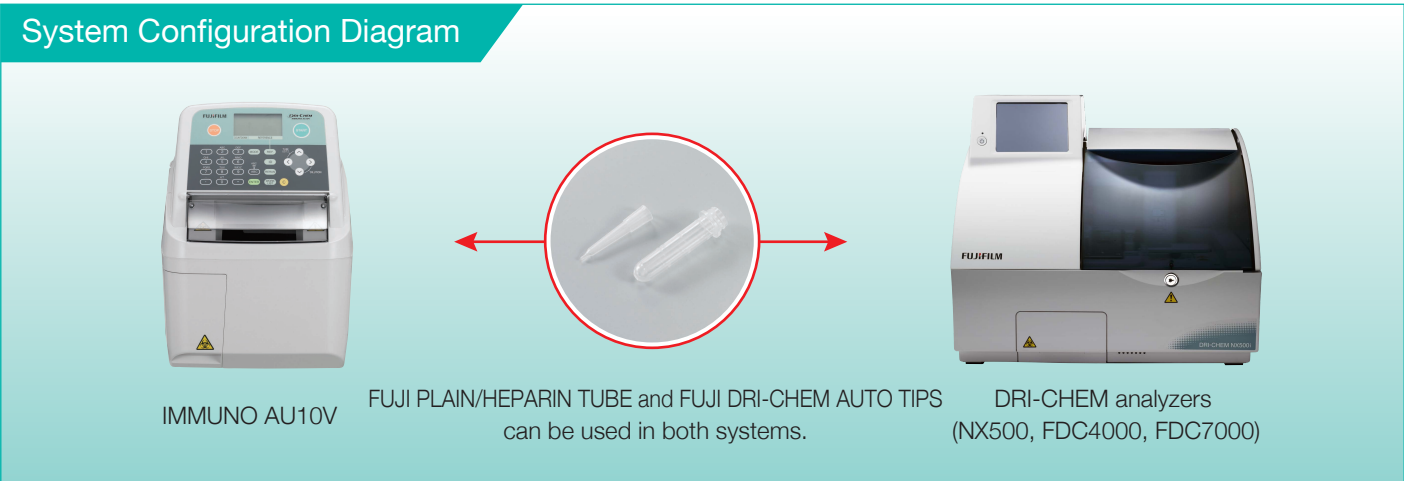


Analyzer Specifications	
Dimensions (W x D x H)	238 x 326 x 310 [mm]
Weight	Approximately 7 kg
Operating temperature	15°C - 30°C (59°F - 86°F)
Setup time	3 min
Required sample volume	basic test : 100 µL dilution test : 20 µL
Data memory	100 tests
Cartridge information	Information about test parameters is embedded in the QR code attached to the cartridge.

Reagent Cartridges Specifications	
Types of sample	v-T4 : Canine and Feline Plasma/Serum vc-TSH : Canine Plasma/Serum v-COR : Canine Plasma (dilution) /Serum v-BA : Canine and Feline Plasma/Serum
Dynamic Range	v-T4 : 0.50 - 8.00µg/dL (6.4 - 103.0 nmol/L) vc-TSH : 0.25 - 5.00 ng/mL v-COR : 1.0 - 30.0 µg/dL (27.6 - 828.0 nmol/L) 1.0 - 50.0 µg/dL (27.6 - 1380.0 nmol/L) (with dilution) v-BA : 2.0 - 150.0 µmol/L
Measurement time	Approximately 10 min (without dilution)
Package Unit	10 cartridges/box
Reagent Storage	2°C - 8°C (35.6°F - 46.4°F)

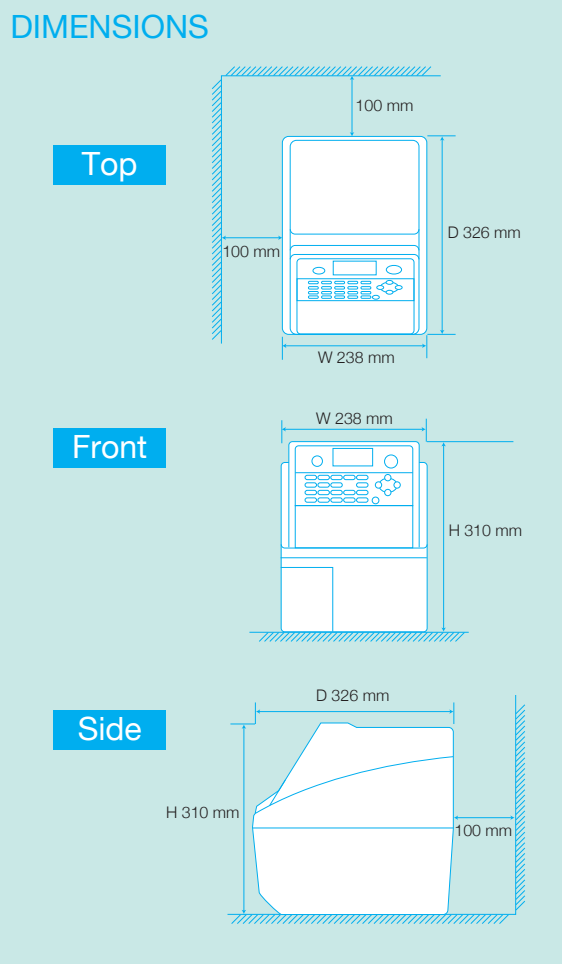


Options

Sample barcode reader

Printer

This equipment complies with FDA performance standards for laser products except for deviations pursuant to Laser Notice No. 50, dated (June 24, 2007).
This equipment is a Class 1 laser product
(designed according to IEC60825-1:2007 / EN60825-1:2007)



DRI-CHEM
IMMUNO AU10V
Automated Fluorescence Immunoassay Analyzer



NEW
Bile Acid Test
v-BA

Innovation in Immunodiagnostic Testing

FUJIFILM DRI-CHEM IMMUNO AU10V

A new in-clinical Immunodiagnostic Analyzer realized by FUJIFILM's cutting edge technologies

FUJIFILM's new Surface Plasmon enhanced Fluorescence (SPF) technology has brought about a compact sized Fluorometry Immunodiagnostic Analyzer of high reliability and accuracy. Ideal for in-clinic immunodiagnostic testing.

Reagent Cartridges Specifications

Test Parameter	Purpose
v-T4 (Thyroxine (T4))	Screening and diagnosis for Hypo/Hyperthyroidism
vc-TSH (Thyroid-Stimulating Hormone)	Diagnosis for Hypothyroidism
v-COR (Cortisol)	Diagnosis for Addison's Disease and Cushing's Syndrome
v-BA (Bile Acids)	Screening for liver diseases and diagnosis for portosystemic shunt

Real time diagnosis and monitoring for endocrine and liver diseases made possible.



Easy To Use

Simple 2 - step procedure

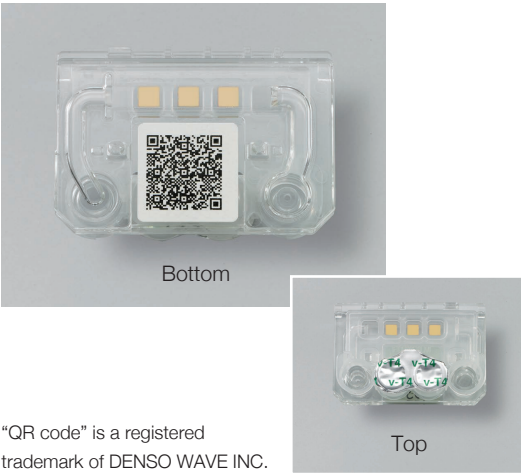
Perform automatic measurements simply by inserting a tube (for samples), a tip (for sampling and injection), and a cartridge (reagents), and press the START key!

No need to add reagents.

All reagents and materials are already prepared inside the cartridge.

Automated calibration for reagents using attached QR code

All calibrations and measurements are conducted automatically based on the QR code* attached to the bottom of the cartridge, which eliminates the need for lot calibration.



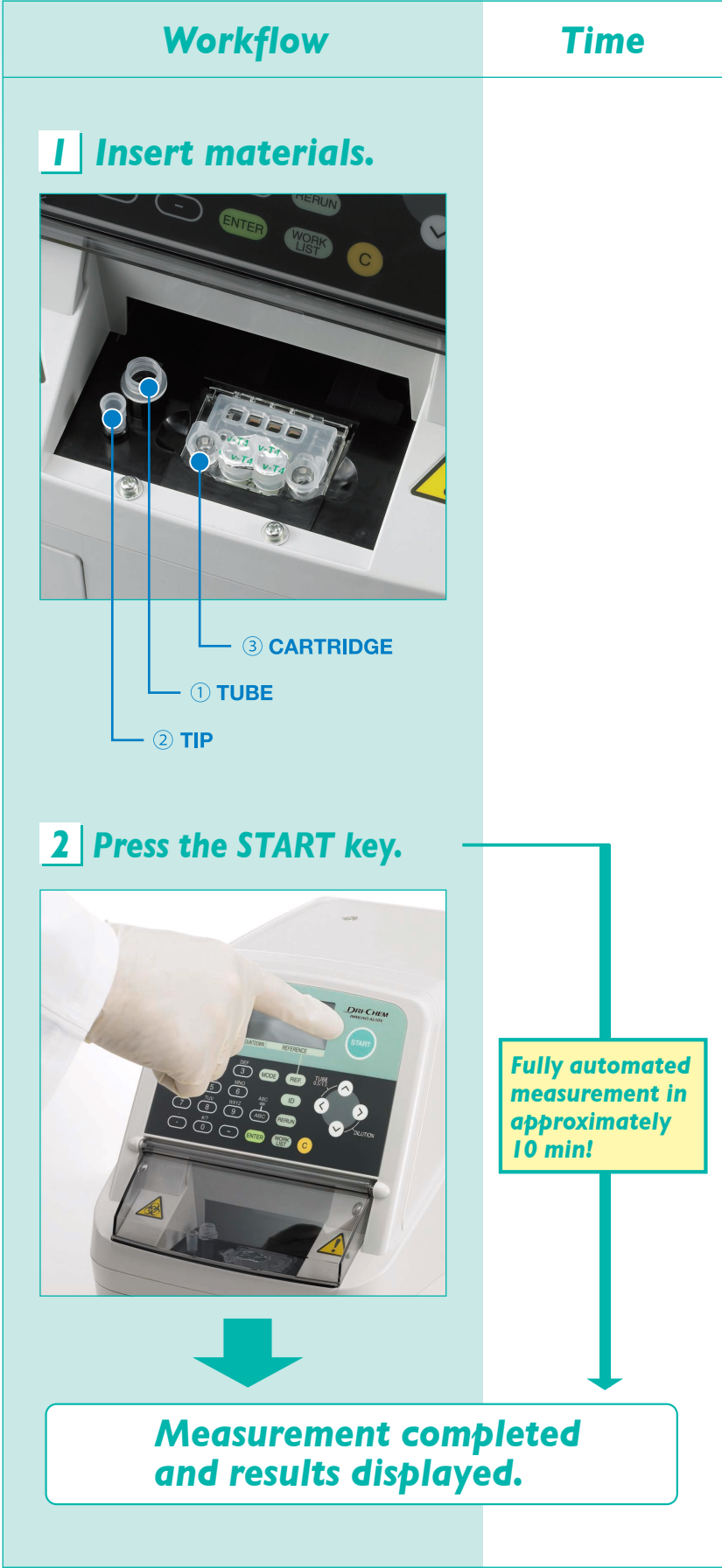
*QR code" is a registered trademark of DENSO WAVE INC.

Flexibility in selecting the most appropriate sample tube (1.5 mL or 0.5 mL)

1.5 mL or 0.5 mL sample tube can be used, allowing flexibility when collecting blood samples in accordance with the measurement situation.

Automatic Dilution Function

AU10V has an automatic dilution function for v-COR measurements to accommodate serum samples with high cortisol levels. (Plasma samples are to be measured in dilution mode regardless of cortisol level.)



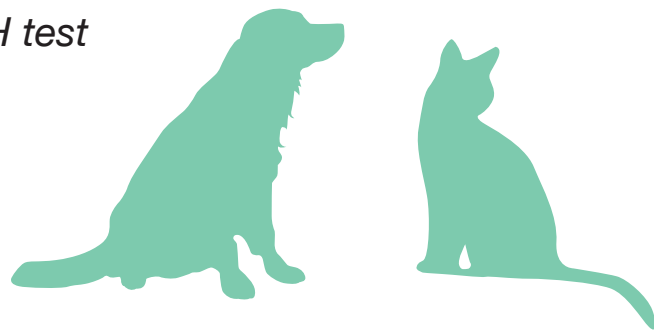
AU10V Key Features

NEW New test parameter: v-BA (canine and feline)

NEW PLASMA samples measurable in all tests

NEW FELINE samples measureable in v-T4

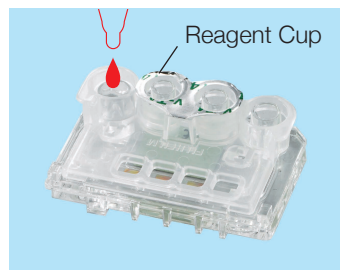
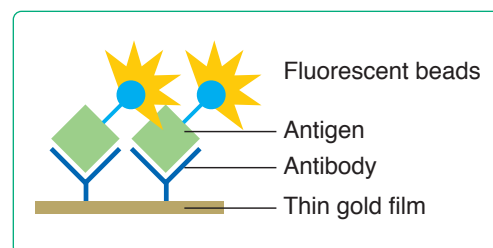
- The only bench top analyzer with TSH test
- Easy to use
- Approximately 10 min measurement



Technology

Principle of the system

- The equipment performs fluorometry using Surface Plasmon enhanced Fluorescence (SPF), a technology based on Surface Plasmon Resonance (SPR), within a small cartridge.
- SPF has two major advantages which made the realization of a compact sized immunodiagnostic analyzer.
- First advantage is it does not require a washing process for surplus fluorescent beads, thus the mechanical process of the equipment is simple.
- Second, since the fluorescence is enhanced by SPR, a low power beam is sufficient enough to generate substantial fluorescence intensity for detection.



① Sample Injection

The sample, which is mixed with the reagent, will be dispensed into the sample flow channel of the cartridge.



② Binding Reaction

The analyte binds with the antibody, which will be attached to the thin gold film.



③ Laser Beam Irradiation

A SPR is generated upon irradiation by the laser beam.



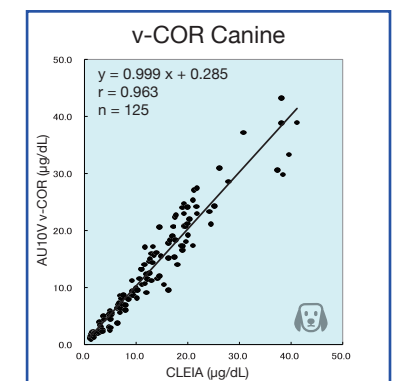
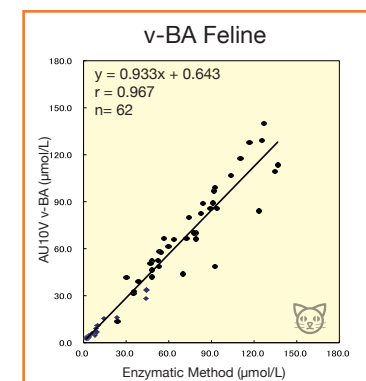
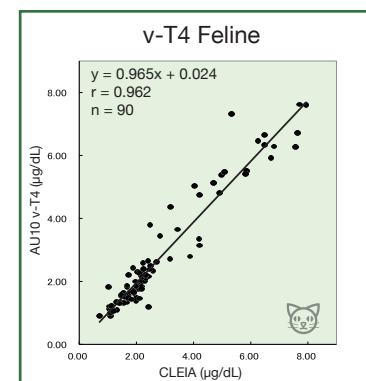
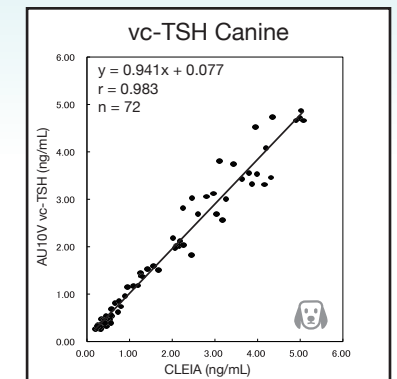
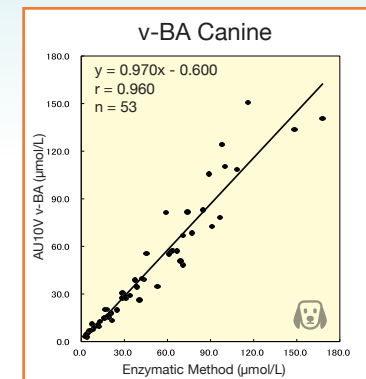
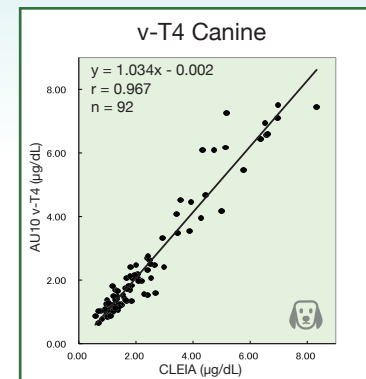
④ Fluorescence Measurement

The fluorescent intensity, which is commensurate with the level of analyte concentration, is detected.

High Reliability

Excellent correlation with standard laboratory analyzer

AU10V provides reliable and accurate results. It has excellent correlations with its comparison methods in serum samples.



AU10V can also accurately measure PLASMA samples as shown in the good correlations of serum and plasma.

