

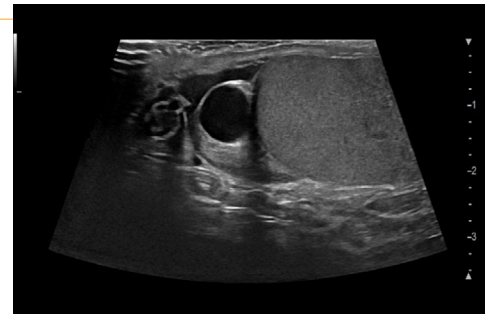


## Testes & Penile Imaging

Ultrasound scans can play a key role in assessing the male reproductive system, especially when the patient is in pain and needs immediate care. That's why our sensitive B-mode, Colour, Doppler, elastography and contrast modes deliver high-resolution imaging for a fast and accurate assessment of swelling, inflammation, trauma or torsion – as well as lesions and problems with blood flow supply and infertility.

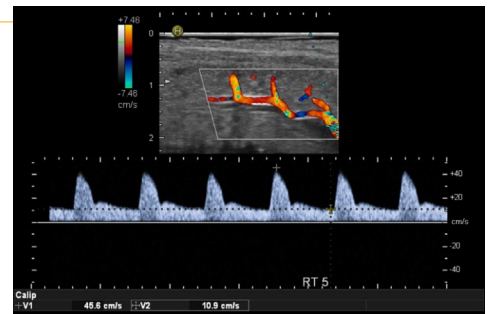
### Detect and localise anomalies with greater speed and precision

We'll help you get a clear delineation of structures for detecting anomalies like an undescended testicle or plaques; finding lesions; and assessing the integrity and thickness of the tunica albuginea. One invaluable tool here is our innovative CMUT linear probe – which incorporates the highest resolution, penetration and a super-wide frequency bandwidth with the newest ultrasound technology. So now you get the full picture in one glance, smoothly guiding your patient management.



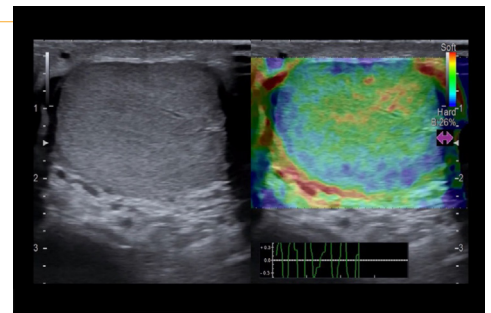
### Assess blood supply to find sources of erectile dysfunction and infertility

Apply our highly sensitive Colour and Doppler modes to study the blood flow supply and diagnose erectile dysfunction. You can also detect inflammation or observe blood flow of a testicular torsion or a twisted spermatic cord. Our solutions help you assess vascularisation and blockages with ease – resulting in a confident patient consultation about possible treatment options.



### Take a harder look at soft tissue for further differentiation

Malignant focal lesions tend to be stiffer than healthy tissue. Which is why back in 2003 we were the first company to launch a strain elastography solution. You can improve cancer detection and border delineation by displaying differences in tissue elasticity via a colour map. It's quick, easy to understand and a standard feature in all our linear ultrasound probes.



the next level in urology  
ultrasound precision



Get a close look at **intratumoural microvascularisation** with CEUS

With our contrast-enhanced ultrasound you can understand vascularisation beyond Doppler possibilities – for example when imaging hypovascular or avascular lesions. It helps you assess more confidently - from testicular segmental infarctions, to the extent of viable tissue after trauma, to the feeding artery. Which means you're quipped with more information to make improved clinical decisions.

