

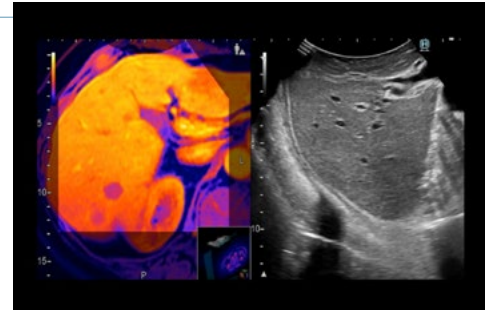


Fusion Imaging Navigation

Step up to the next level of intraoperative navigation and guide your exact way through the body with our fusion imaging RVS. Combining CT, MRI or PET with real-time IOUS will help you locate lesions and target your liver resections with great precision. Adjust your preoperative strategy directly in the OR – for safe and accurate resection tailored to your patient.

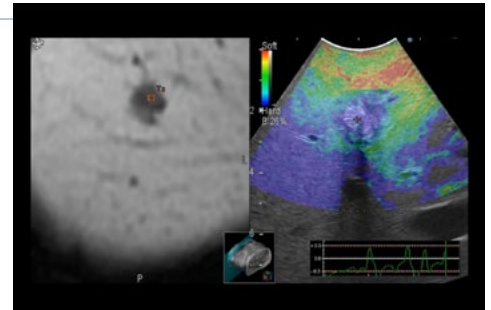
Experience precise navigation with multimodality fusion imaging

Synchronize a reference image (from previous CT, MR, PET, or US scans) with live IOUS from our finger-grip probe with just one click. This enables you to guide your resection with great accuracy directly in the OR, and locate difficult-to-see structures – for example disappearing lesions after chemotherapy. Even complex liver resections or ablation treatments become easier and more accurate.



Add even more insights with advanced ultrasound imaging modes

Combine fusion with other imaging modes in your real-time ultrasound scan. Switch on Colour Flows and Elastography, or enhance microvasculature with contrast agents to obtain a complete understanding of your patient's condition. This truly multiparametric intraoperative solution will help you to be more efficient, with accurate positioning of RF ablation needles. Stay flexible, react quickly and make informed decisions.



Bring your pre-operative planning of liver resections directly in the OR

Integrate your pre-operative planning, including all anatomical information and volumetry done with Synapse 3D Liver Analysis*, into our fusion imaging solution. With this unique combination, you can reference clearly and in real time all resection lines, lesions and margins for a safe and accurate guidance through this complex procedure.

*Liver Analysis module from Synapse 3D is a product of Fujifilm Medical Co., Ltd in Japan.

